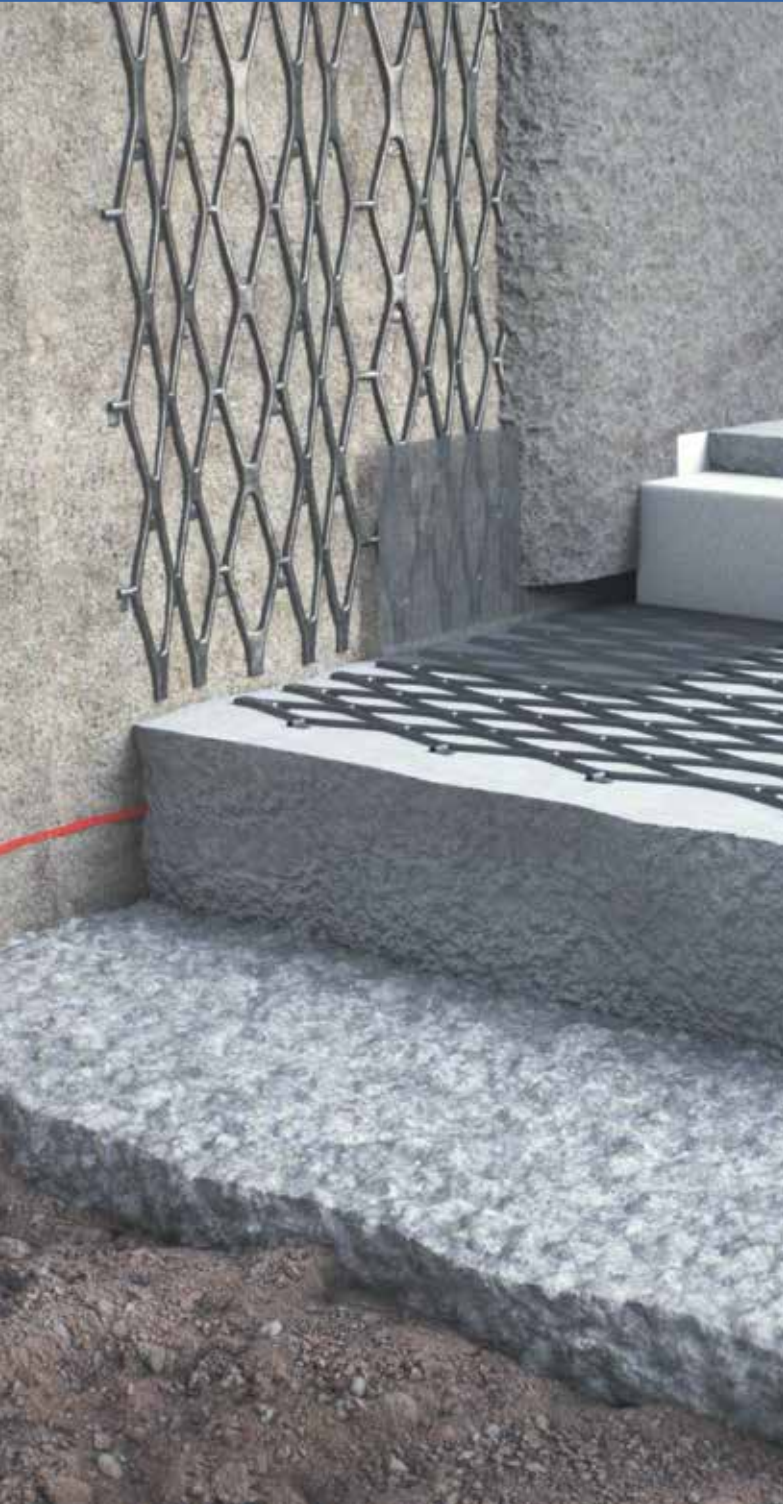


DOLENCO DRAIN FOR BASEMENT

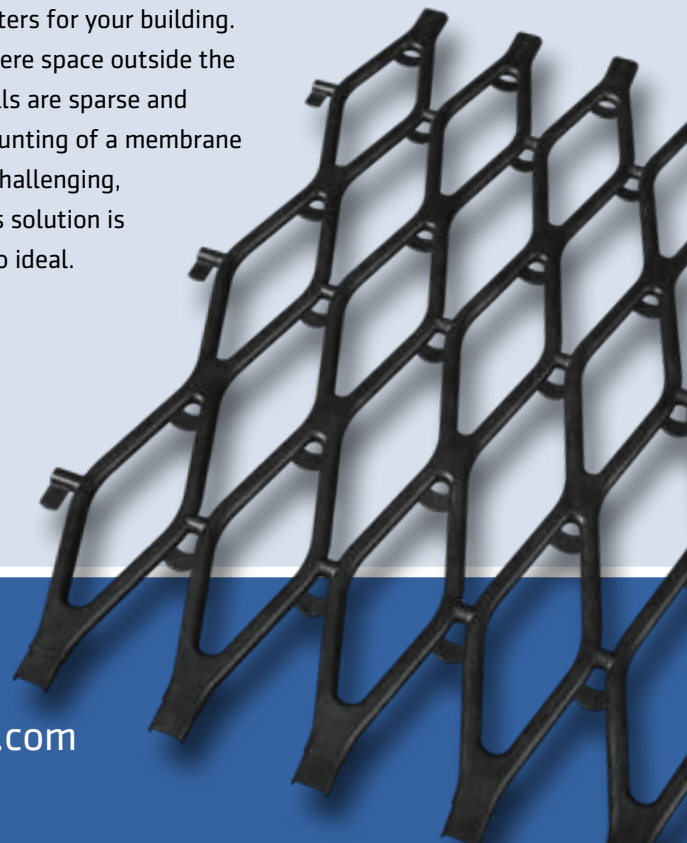
Build on a Sustainable Future



Choose an innovative and technically advanced solution by choosing Dolenco Drain when constructing your basement; you not only achieve basement walls that are permanently without pressure, you also lift you basement floor further away from the groundwater level. With a rising groundwater levels, this can be crucial to your construction over time. By building with Dolenco Drain you also reduce the environmental impact of your construction noticeably through a reduction in resource consumption and thus also a reduction of carbon footprint by up to 85%.

Less resource consumption means reduced costs and shorter construction time without compromising on the quality and technical specifications of the construction. By building with Dolenco Drain, you are supporting our effort to meet the UN's Sustainable Development Goal of developing reliable, sustainable and resilient infrastructure and reducing resource consumption.

Since this solution makes it possible to build even closer to the plot boundaries, it ensures extra square meters for your building. Where space outside the walls are sparse and mounting of a membrane is challenging, this solution is also ideal.



DOLENCO

+45 4752 4752
info@dolencodrain.com

How much can you save?

By using Dolenco Drain for double flooring in your construction you can save up to 66 € per square meter, while reducing your building's carbon footprint by 85% and saving up to seven working days.

You avoid the expense of having to dig 25 cm of the soil layer and replace it with drainage material, and you avoid the 25 cm wall.

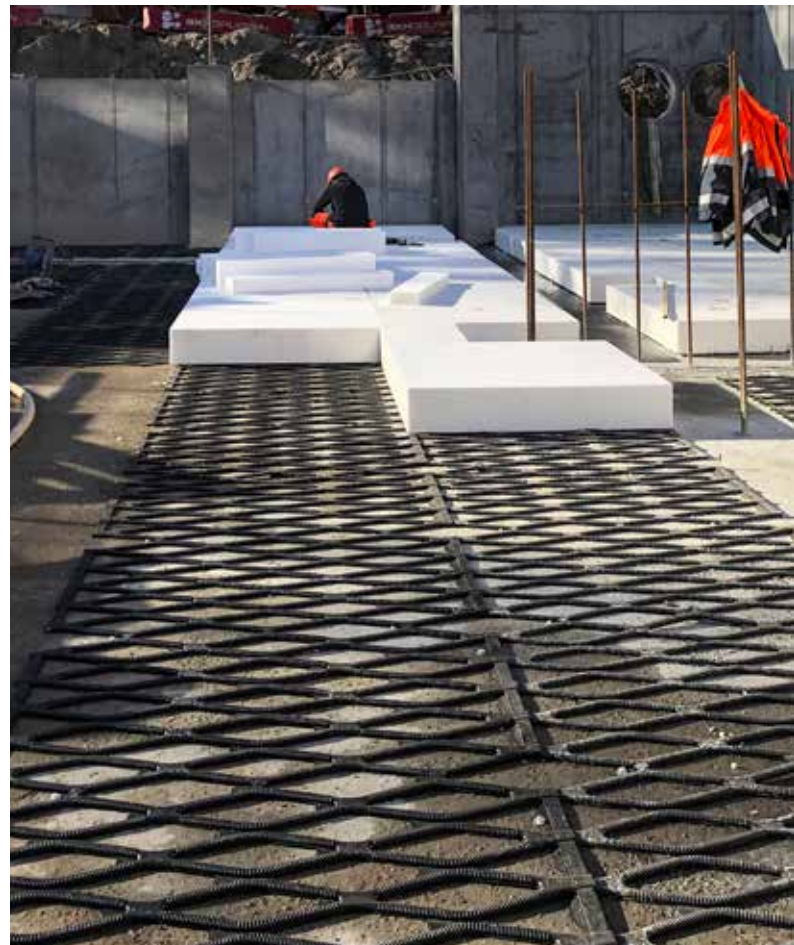
Economic comparison:

€/m ²	Stone drain	Dolenco Drain
Removing 25 cm soil	11,20	-
Installation of 25 cm drain material	63,34	-
Dolenco Drain	-	22,67
25 cm wall	13,87	-
In total	88,40	22,67



Comparison of environmental impact of the same construction project:

Kg CO ₂ /m ²	Stone drain	Dolenco Drain
Removing 25 cm soil	1197	-
Installation of 25 cm drain material	1560	-
Dolenco Drain	-	738
25 cm wall	2034	-
25 cm bitumen membrane	97	-
25 cm wall rebar	525	-
In total	5413	738



Construction of school building at Oehlenschærgade in central Copenhagen 2019. Secant piling and double floor.

DOLENCO

4752 4752
info@dolencodrain.com